

# product data materials



services

equipment

machinery

drying



## 4037L

### High performing seed filmcoating polymer

Seedworx 4037L is aimed at the large volume row crop agricultural market

#### Applications

- Can be used for filmcoating

#### Target Use

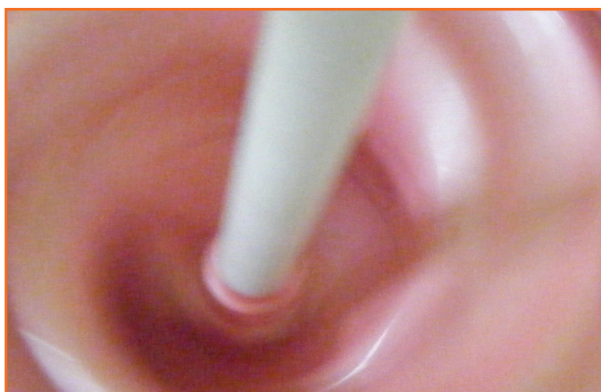
- Seed treatments
- Large volume agricultural sector
- Unique formulation that can be used on a very wide range of different seed types

#### Features

- Uniform coverage of treatment & reduced dust off
- Excellent seed flow
- Shiny, quality finish with high opacity
- No need for messy powder additive
- Concentrated formulation

#### Benefits

- Optimum performance against disease & pest pressure
- Enhanced seed flow through handling seed plant and planting equipment for improved plant spacing and maximized yields
- WOW factor appearance
- Simplicity and efficiency
- Minimized use rate
- Easy cleaning of equipment after use
- Increased yields for grower profitability
- Optimum performance against disease & pest pressure
- High Value appearance
- Minimized use rate
- Easy cleaning of equipment after use
- Meets EPA approved requirements



Product Overview	Properties					
	Binding Capacity	Opacity	Finish	Flow Rating	Dust Control	Color(s)
	Med-High	Med-High	Shiny, Bright	Med	Med-High	Neutral or R,G,B,V



# 4037L

## Physical Properties

<b>Viscosity:</b>	Thick pourable liquid
<b>Form:</b>	Liquid viscous concentrate
<b>pH (measured at 20°C)</b>	6.5-7.5
<b>Density:</b>	1.143
<b>Weight:</b>	9.54 lbs per Gallon
<b>Colors:</b>	Neutral, Red, Blue, Green
Seedworx 6100X is a liquid, water-based co-polymer	

## Storage and Packing

We recommend storage in a clean, dry area at ambient temperature, above 41° F and below 86° F (5°C - 30°C)

Material should be stored in original containers and kept closed when not in use

Shelf life of the product kept under these conditions is expected to be 12 months

## Application Guide

Seedworx 4037L should be stirred before use as some settling may occur during transport and storage. If product has sat for more than 4 hours, using appropriate equipment, mix for 30 minutes prior to treating. For product sitting less than 4 hours, stir for 15 minutes prior to usage. For most applications Seedworx 4037L should be diluted with water before use. Typical slurry application rates are shown in the table below.

Seed Type	Economy Rate	Standard Rate	Quality Rate
	Fl. Oz/cwt Seed	Fl. Oz/cwt Seed	Fl. Oz/cwt Seed
<b>Soybean</b>	<b>0.75</b>	<b>1.0</b>	<b>1.5</b>
<b>Dry Beans</b>	<b>1.50</b>	<b>1.75</b>	<b>2.0</b>
<b>Canola</b>	<b>2.0</b>	<b>2.25</b>	<b>2.5</b>

This table is purely for guidance only and any mixes should be tested before any large scale application. Once a mix has been prepared it should be used on the same day. Storage of mixtures is not recommended

*The information given is believed to be accurate and is given in good faith but no representation or warranty as to its completeness or accuracy is made.*